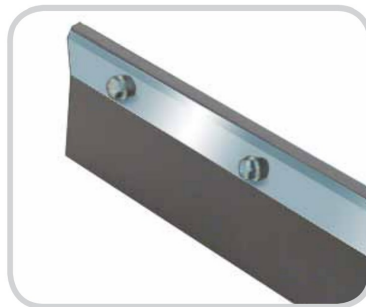


V-PLOUGH Belt Ploughs

Protection for the Pulleys

Keeping your conveyor beltlines clean is a problem that is not confined to the head pulley area. Many times rocks, spillage, and other debris get into the take-up and tail pulleys causing damage to the belt, lagging, and mechanical splices. This can lead to belt tracking problems and other maintenance and repair expenses. The V-Plough is uniquely designed to clean the inside of the return belt and eliminate nagging problems.



The blade's 20° leading edge lifts and "spirals" debris and water off the belt quickly and efficiently.

Exclusive Blade Design

A specially-shaped blade is the key to the V-Plough's cleaning power. The blade's 20° leading edge lifts and "spirals" debris and water off the inside belt quickly and efficiently. Conventional flat-bladed ploughs cause the carryback materials to roll and repeatedly try to push under the blade. And the V-Plough Blade is self-adjusting. The blade floats on the belt and maintains blade-to-belt contact as the blade wears.

Key Features and Benefits

- Cleans the inside/clean side of the return belt
- Eliminates conveyor damage and belt mistracking caused by debris lodging in the tail pulley or take-up
- Can be adjusted to the belt surface for problem-free operation
- Available in a range of sizes for multiple belt widths
- Removes carryback on both sides of the conveyor
- FRAS blades are approved for underground use

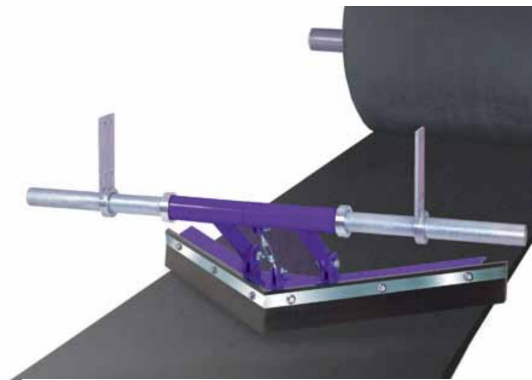
Unique Turnbuckle for Adjustment.



A corrosion-protected turnbuckle allows the blade to be fine-tuned to the belt at installation. This means the nose of the plough is accurately positioned so it will not dig into the belt and potentially cause damage to the belt or the plough. It also eliminates vibration that is typical with ploughs using chain links for adjustment.

Easy Installation and Maintenance.

The V-Plough comes fully assembled and can be placed right into position on the conveyor. Simple, step-by-step instructions are included for quick installation. Since the blade is self-adjusting, no blade readjustment is needed throughout the blade life to accommodate for wear. Blade change-out is simple. Replacement blades are cut to size and new hardware is included.



V-Plough Replacement Blades

Belt Width (mm)	Ordering Number	Item Code
	Polyurethane blades (Pair)	
450	BP450-B	74055
600	BP600-B	73777
750	BP750-B	73778
800	BP800-B	74057
900	BP900-B	73779
1050	BP1050-B	73780
1200	BP1200-B	73781
1400	BP1400-B	73782
1500	BP1500-B	73783
1600	BP1600-B	73784
1800	BP1800-B	73785

Note: Polyurethane blades are approved for use in underground mines.

Single Pole V-Plough

Belt Width (mm)	Ordering Number	Item Code	Ordering Number	Item Code
	Powder Coated		Stainless Steel	
450	BP450	73102	BP450-S/S	76337
600	BP600	73104	BP600-S/S	76338
750	BP750	73106	BP750-S/S	76339
800	BP800	73107	BP800-S/S	76340
900	BP900	73108	BP900-S/S	76341
1050	BP1050	73110	BP1050-S/S	76342
1200	BP1200	73112	BP1200-S/S	76343
1400	BP1400	73113	BP1400-S/S	76344
1500	BP1500	73114	BP1500-S/S	76345
1600	BP1600	73115	BP1600-S/S	76346
1800	BP1800	73117	BP1800-S/S	76347