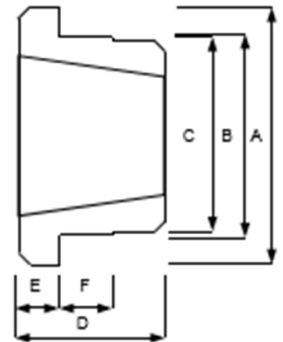


Taper bore weld-on hubs are manufactured from steel, drilled, tapped, and taper bored to accept standard taper lock bushes. The extended flange provides a convenient means of welding hubs into fan rotors, steel pulleys, plate sprockets, impellers, agitators, conveyor drums, and many other devices which must be securely fastened to the shaft. Weld on hubs are simple to install, and entirely suitable where severe operating conditions are encountered. This type of construction eliminates mounting difficulties, and prevents loosening and wear on the hub during operation.



Hub Reference	Bush Number	A	B	C	D	E	F
W16	1615	82.55	73.03	72.24	38.10	15.88	9.53
W20	2012	101.60	88.90	88.11	44.45	19.05	14.45
W25	2517	127.00	111.13	110.34	44.45	19.05	14.45
W30	3030	149.86	133.35	132.56	76.20	25.40	19.05
W35	3535	184.15	158.75	157.96	88.90	21.75	25.40
W40	4040	225.43	196.85	196.06	101.60	31.75	31.75



TAPERLOCK BUSHES

Max. Bore	1108	1210	1610	1615	2012	2517	3020	3525	4030	4535	5040
Metric	28	32	42	42	50	60	75	100	115	125	125
Imperial	1.125"	1.250"	1.625"	1.625"	2.00"	2.500"	3.00"	3.500"	4.00"	4.500"	5.00"
Large End Dia.	38	47.5	57	57	70	85.5	108	127	146	162	177.5